



MULTI FUNCTION TOOL 400W



TSMFT4

www.thetoolshed.co.nz

TABLE OF CONTENTS

Product Details.....3
Specifications.....4
Product Identification.....5
Safety Guidelines.....6
Assembly.....9
Operation.....10
Maintenance.....11
Exploded Parts View.....12

Thank You

For the purchase of this ToolShed product. We try our hardest to supply customers like you with the best quality products available, at the best price possible. We cant wait to continue working together in the future.

Please contact us for any servicing, replacement parts, or questions you might have about your ToolShed product by visiting our website, or calling: 0800 948 665.

PRODUCT DETAILS

Product Model ToolShed Multi Function Tool 400W

Product Code TSMFT4

DISTRIBUTED BY:



Note:

This manual is for your reference only. Due to the continuous improvement of the ToolShed products, changes may be made at any time without obligation or notice.

Warranty:

This product may be covered under The ToolShed warranty. For more information, see our Terms & Conditions at www.thetoolshed.co.nz

SPECIFICATIONS

Power Supply	230 Volts 50 Hertz
Power Input	400 Watts
Speed	15000–22000 RPM
Protection Class	Class II
Blades	Quick Change Multi-Fit
Vibration Level (K=1.5)	3.772 m/s ²
Net Weight	1.5 kg

Intended Use

- This multi function tool may only be used for dry sanding work, for cutting wood and plastics as well as with the appropriate attachments (cutting tools) for different work on wood, metal, plaster, plastic and filler surfaces. The sanding paper pads can also be used for removing rust, paint, and for intermediate sanding. The included straight cutter is suitable for cutting wood and plastics.
- This multi function tool is not intended for commercial continuous operation.
- Any use beyond these parameters (different media, applying force) or any changes to the tool (reconstruction, no original accessory) can lead to serious risks and is regarded as use that is contrary to the intended purpose.

PRODUCT IDENTIFICATION



- 1 Quick Change Lever
- 2 ON/OFF Switch
- 3 Vibration & Shock Proof Grip
- 4 Variable Speed Dial
- 5 Power Cord
- 6 Accessory Drive Spindle
- 7 Scraper Attachment
- 8 Wood/Plastic Cutter Attachment
- 9 Sanding Paper: 1x P60, & 1x P80 Grit
- 10 Sanding Pad Attachment
- 11 Replacement Carbon Brushes

SAFETY GUIDELINES

WARNING

READ ALL SAFETY WARNINGS & INSTRUCTIONS. Failure to follow instructions and warnings could lead to serious injury, electric shock, or fire.

Work Area Safety

- **Ensure that your work area is kept clean and well lit.** Lack of visibility and clutter greatly increase the risk of accident when using tools.
- **Keep bystanders, pets, and children clear when operating this power tool or machine.** They can cause distraction or risk injury to themselves.
- **Ensure you are not operating the power tool or machinery in the presence of dust, liquids, flammable gases, or anything that can create an explosive atmosphere.** Power tools and machinery can create sparks which can lead to ignition and fire hazards in working environments.

Personal Safety

- **Always wear personal protective equipment (PPE).** Eye protection, ear protection, dust masks, and other protective equipment will help to reduce the risk of personal injury or long-term illnesses.
- **Dress appropriately. DO NOT wear loose clothing that can get caught in moving parts.** Keep hair, loose clothing, jewellery, and anything else that could be of risk, away

from moving parts in the machine, or they could become caught therein.

- **Always remain alert and DO NOT operate power tools or machinery under the influence of any substances such as alcohol or drugs, including prescription medications.** Lack of focus could lead to injury or accidents while operating these power tools and machinery.
- **Always ensure proper footing and balance.** Overreaching can lead to slipping and falling which can result in injury or accident.
- **Ensure the power switch is in the OFF position before connecting any battery, or power source to the power tool or machinery.** This can cause injury as tools and machinery can suddenly fire incidentally when live, causing accidents.
- **Use all provided dust collection and extraction attachments, if included.** This equipment, along with the use of PPE dust masks, can help keep you safe from dust, and keep your work site clear from hazards.
- **Ensure loose parts such as wrenches or adjusting keys are removed before starting the power tool or machinery.**

SAFETY GUIDELINES

Electrical Safety

- **DO NOT use the power tool or machinery in rainy conditions or wet areas where the power tool or machinery could get wet.** Water in this power tool or machinery can lead to electric shock.
- **Only use the power tool or machinery when the plug correctly matches the power outlet.** Modifying plugs greatly increases the risk of electric shock.
- **Keep the power cord away from anything that could damage it such as sharp edges, moving parts or heat.** A damaged power cord increases the risk of electric shock.
- **Only operate outdoors with the use of an outdoor extension lead.** Not all extension leads are suited to outdoor use and using one which is not can greatly increase the risk of electric shock.
- **Avoid body contact with grounded or earthed surfaces.** Surfaces such as radiators, ranges, pipes, and refrigerators can increase the risk of electric shock due to your body being earthed or grounded.
- **Never carry the power tool by the cord, or yank the cable from the power outlet.** This can damage the internal wiring and may become a hazard.

Power Tool & Machinery Use & Care

- **Use the correct tool for the job.** Forcing a tool to do a job it was not designed for increases the risk of accident or injury.
- **Disconnect tools and machinery from power, or remove batteries before doing any maintenance or adjustments, or before storing the tools and machinery.** This reduces or removes the risk of a power connection that causes the tool or machinery to accidentally fire, which can help prevent injury or accident.
- **Check the general condition of the power tool for damage or any problems that could affect the way the tool or machine works.** An unrepaired tool or machine can lead to accident and injury. Only have your tool or machine repaired with genuine parts from The ToolShed.
- **Only use the power tool and machinery with genuine parts or accessories that are designed to be used with this power tool and machinery.** Failure to do so could result in accident or injury, or damage your tool or machinery.
- **Store your tool or machinery out of reach of children, and away from untrained personnel when not in use.** Use by somebody untrained, or a child, could lead to accident or serious injury.

WARNING

Electric shock can cause serious injury or, in some cases be fatal.

SAFETY GUIDELINES

Service

- **Have your tools and machinery serviced at The ToolShed with ToolShed replacement parts.** This will ensure that the safety of the power tool or machine is maintained.



WARNING

The warnings and precautions discussed in this manual cannot cover all possible conditions and situations that may occur. It must be understood by the operator that common sense and caution are factors which cannot be built into this product, but must be supplied by the operator.

Always Use Common Sense

- It is not possible to cover every conceivable situation you can face. Always exercise care and use your common sense. If you get into a situation where you feel unsafe, stop and seek expert advice. Contact your dealer, service agent, or an experienced user. Do not attempt any task you feel unsure of!
- **Do not let familiarity gained from the frequent use of tools allow you to become complacent and ignore tool safety principles.** A careless action can cause severe injury within a fraction of a second.
- **Multi Function Tool Specific Safety**
 - Hold the multi function tool by its insulated gripping surfaces, especially when performing an operation where the cutting accessory may contact hidden wiring or its own cord. The cutting accessory contacting a "live" wire may make exposed metal parts of the power tool "live" and has the potential to give the operator an electric shock.
 - Inhaling sanding dust and debris is dangerous to your health. Always work with adequate ventilation and a dust mask when dust inhalation is possible.
 - Hold the multi tool with both hands and ensure you have a stable stance.
 - Secure your work piece. A work piece can be processed much more safely when it is secured by clamps or in a vice, rather than held by your hand.
 - Do not process material which contains asbestos. Asbestos entering your system can be very dangerous and may cause cancer.
 - Take care when removing some paints as older paint may contain lead which is poisonous to your health. Use suitable inhalation protection and ensure adequate ventilation.
 - Keep your hands away from the saw blade. Do not reach under the work piece while cutting. Touching the saw blade may cause injury or accident.

ASSEMBLY

Installing the Sanding Pad

- Fully lift up the quick change lever as shown in the image below.



- Attach the sanding pad attachment to the accessory drive spindle.



- Return the quick change lever to its original position to lock the accessory in place.

Attaching/Changing the Sandpaper

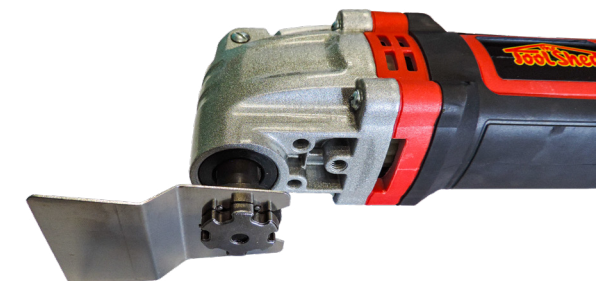
- The sanding pad attachment is equipped with a hook and loop pad, so you can quickly and conveniently change the sanding paper pads. Keep the adhesive fabric of the sanding pad holder free from dirt and dust, so the adhesive fabric will work as desired.
- 1. Position one corner of the sanding paper pad to the pad holder and firmly press it down.
- 2. To remove the sanding paper pad, grasp one edge and pull it off the sanding pad holder.

Using an Attachment (Spade)

- Fully lift up the quick change lever as shown in the image below.



- Attach the spade attachment to the accessory drive spindle.
- Check the correct fit of the attachment. Make sure the pins fit exactly into the openings of the attachment.



- Low down the quick change lever. The attachments can be positioned in an angle of 30° to both sides of the multi tool, e.g. in line with the housing or on the right or left side of the housing.



WARNING

Before undertaking any work on the Multi tool, or changing the accessories, always unplug the tool from its power source.

OPERATION

Prior to First Use

- Remove the multi tool and all accessories out of the packaging and check all parts for damage in transit. Keep packaging materials out of reach of children for fear of suffocation.

ON/OFF Switch

- To switch on the multi tool, push the ON/OFF switch forwards.
- To switch off the tool, pull the ON/OFF switch back.



Variable Speed Control

- With the variable speed dial you can adjust the speed according to your application. Select the appropriate speed setting and make sure the multi tool does not become overloaded and shuts down.
- Turn the speed controller steplessly to the desired setting to increase or decrease the speed. The controller can be adjusted from 1 – 6. The speed rate can be changed during operation also as needed.

Hint: The optimal speed for cutting or sanding a workpiece varies depending on the material being processed. Conducting practical tests is essential for achieving the best performance.



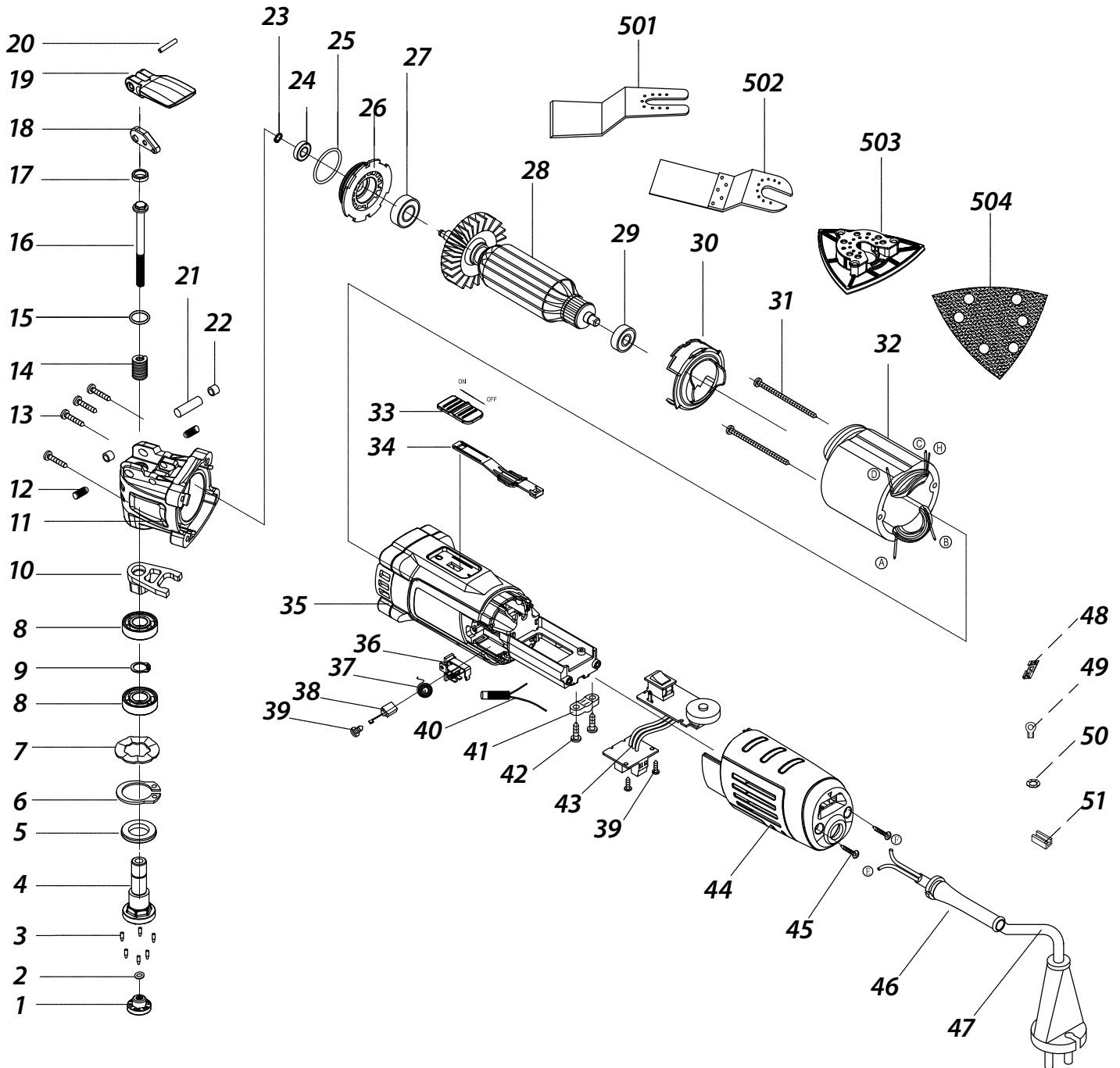
MAINTENANCE

- Before cleaning or performing any maintenance, you must ensure the tool is switched off and disconnected from the power supply.
- Compressed air is the most effective way to clean this tool. Always wear PPE safety goggles when cleaning tools with compressed air.
- Check the carbon brushes of the machine in the event of excessive sparking.
- Ventilation openings and switch levers must be kept clean. DO NOT attempt to clean by inserting pointed objects through openings.
- Do not use harsh chemicals or solvents when cleaning this tool.
- If you discover any damaged or broken parts, consult your nearest ToolShed for replacements and advise.

Replacing the Carbon Brushes

- When the carbon brushes wear out, the multi tool will spark and/or stop. Stop operation as soon as this happens. The Carbon Brushes should be replaced immediately, or prior to the next use of the multi tool.
- Carbon brushes will wear out after many uses, but when the carbon brushes need to be replaced, contact your nearest ToolShed to repair the tool.
- Always replace both carbon brushes at the same time.
- After replacing the brushes, let the tool run for 30 seconds to ensure the brushes are fitted properly.

TSMFT4 EXPLODED VIEW & PARTS LIST



1	Flange	14	Spring	28	Armature	42	Screw ST4.0×14 X2
2	Felt Ring	15	Sealing Washer	29	Bearing 607	43	Adjustable Switch
3	Pin X6	16	Bolt	30	Guide Wind Circle	44	Back Housing
4	Spindle	17	Sealed Cap	31	Screw ST4.0×60 X2	45	Screw ST4.0×16 X2
5	Seal Ring	18	Cam Wheel	32	Stator	46	Cable Sheath
6	Circlip for Shaft 28 X2	19	Trigger	33	Pull Brace	47	Cord
7	Spline Spring Washer	20	Screw M4×16	34	Link Pale	48	Wiring Piece X4
8	Bearing 6001 X2	21	Pin	35	Plastic Housing	49	O Lug Ø4
9	Circlip For Shaft 14	22	Steel Bushing X2	36	Brush Holder X2	50	Tooth Gasket Ø4.2
10	Block of Togger	23	Circlip for Shaft 4	37	Spring X2	51	Wiring Buckle X3
11	Reducer	24	Bearing 625	38	Carbon Brush X2	501	Scraper Attachment
12	Limit Ball X2	25	Sealing Washer X2	39	Screw ST3×8 X6	502	Cutter Attachment
13	Screw ST4×27 X4	26	Middle Cover	40	Inductor X2	503	Sanding Pad
		27	Bearing 608	41	Cord Clip	504	Sand Paper X2